




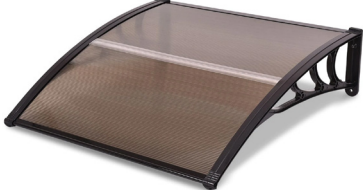



Snow Deflector Products



NYS Clean Heat
Supported

The NYS Clean Heat program, and best practice, requires that all heat pumps units be properly protected from excess snow that would impact performance. Heat pumps placed underneath a roof eave's drip line (or under a deck with wide slats) are subject to snowslide or excess water drip that could clog, ice up, or otherwise restrict airflow through the heat pump. These units must have a snow deflector installed to assure proper winter operation for heating. The preferred and much more common installation approach is to place units on a gable end with no drip at all. When gable-end installation is not possible, side-discharge heat pumps under an eave can be protected with the combination of a working gutter and an asphalt roof.

The following products are available for direct purchase and delivery to installation contractors in New York.

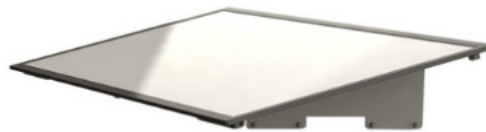
PRODUCT	WHERE TO BUY	PRICE
Ktaxon Door/ Window Awning 	Walmart	\$40 - \$80
Zimtown Window Door Awning 	Walmart	\$50 - \$100
Mcombo Window Awning 	Wayfair Amazon	\$60 - \$100
Polycarbonate Door/Window Awning 	Overstock	\$90 - \$250
InnoPro – H24 and H21P 	InnoProhvac	\$95 - \$230
Polycarbonate Door/Window Awning 	The Home Depot	\$125 - \$1000
Quick-Sling Roof Bracket QRSB1000 	supplyhouse	\$285

PRODUCT**WHERE TO BUY****PRICE****Nulmage Awnings**[Lowes](#)

\$400 - \$600

Mesh cover with galvanized steel frame[COVER-TECH](#)

\$400 - \$600

Quick-Sling QSW51000[northstock](#)

\$457

Mitsubishi Snow/rain deflector (SRD)[Link Drive](#)

\$299

Vertical Discharge Heat Pump

Due to manufacturer clearance requirements for vertical discharge heat pumps, installers should avoid the use of snow deflectors whenever possible. When snow deflectors divert the tempered exhaust air outwards instead of upwards, a portion of it gets pulled back into the heat pump, reducing system efficiency. All effort should be made to place the heat pump in a location that is protected from snow slides or excessive water drippage that could clog, ice up, or otherwise restrict airflow through the heat pump. The best practice is to install the heat pump at the gable end of the house, fully under a deep eave, or under a tightly boarded deck with sufficient clearance over the heat pump. One estimate quantifies the impact of a diverting snow deflector as a loss of 2% to 4% of heating and cooling efficiency.

If a vertical discharge heat pump requires protection from snow or excessive water drip, installation contractors must consult the heat pump product manufacturer for approved options. In some cases, use of an unapproved product attachment could void the unit's warranty. In these cases, a manufacturer may have additional guidance on expanded side-clearances, and clearances from adjacent units when such products are used.

The following products are available for purchase on the market.

[InnoPro | The Protection Pros](#)

Carrier has approved use of InnoPro on its products with additional clearance requirements.



[COVER-TECH | Heat Pump Cover](#)



NYS Clean Heat
Supported